

Self-Contained Luminaire

Style Variant 28011 LED CGLine



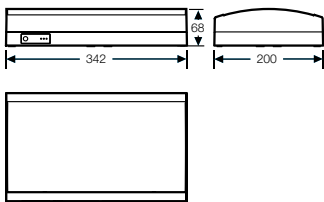
- Self-monitoring LED self-contained luminaire for stand-alone operation or for connection to the central monitoring device CG Controller CGLine 400 or PC-Interface
- Selectable operating time: 1 h or 3 h
- Minimum service requirement due to high service life of the LEDs (50,000 hours)
- Brightness selectable in 3 steps
- Test results with fault analysis (LED, charging and battery circuit) as well as status display (operation, function test, duration test) via 3 coloured LEDs
- Automatic function test (weekly) and duration test (every 3 months)
- Manual function test or operational duration test via testing buttons
- Automatic charging monitoring and deep discharge protection with restart inhibit
- 1 minute delay of normal mode after mains returns (acc. to DIN VDE 0100-718)
- Blocking function with CG Controller CGLine 400 or PC interface in times of shut-down
- Luminaires are generally suitable for maintained or non-maintained mode



28011 LED CGLine
with cover PL

Viewing distance	32 m
Luminous flux Φ_E/Φ_N at the end of rated operating time	50 % 1 h 20 % 3 h
Housing material	Polycarbonate (850 °C glow wire resistant)
Housing colour	Light grey, sim. RAL 7035
Weight	1.2 kg
Type of mounting	Wall and ceiling mounting
Connection terminals	Mains connection 3 x 2.5 mm ² / Bus connection 2 x 1.5 mm ²
Connection voltage	230 V AC, 50 Hz
Power consumption mains operation	6.4 VA
Permissible ambient temperature	Maintained mode -5 °C to +30 °C Non-maintained mode 0 °C to +35 °C
Battery	maintenance free and gas tight NiMh 4.8 V / 1.1 Ah
Light source	3 x HighPower LEDs

Dimensions in mm



Ordering details

Type	Scope of supply	Order No.
Escape sign luminaire 28011 1-3/D LED CGLine	single-sided, without cover	4 0071 352 221
Cover PL acc. to DIN 4844	Cover with silkscreened pictogram 	4 0071 349 320
Cover PR acc. to DIN 4844	Cover with silkscreened pictogram 	4 0071 349 321
Cover PU acc. to DIN 4844	Cover with silkscreened pictogram 	4 0071 349 323
Cover PL	Cover with silkscreened pictogram 	4 0071 348 011
Cover PR	Cover with silkscreened pictogram 	4 0071 348 012
Cover PU	Cover with silkscreened pictogram 	4 0071 348 013

Bestellangaben

Type	Order No.
Wire guard	4 0071 348 370
Through-wiring set PE, N, L', L and D1, D2	4 0071 350 422



Through-wiring set

Self-Contained Luminaire Style Variant 28021 LED CGLine



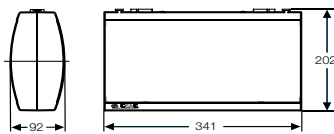
- Self-monitoring LED self-contained luminaire for stand-alone operation or for connection to the central monitoring device CG Controller CGLine 400 or PC-Interface
- Selectable operating time: 1 h or 3 h
- Minimum service requirement due to high service life of the LEDs (50,000 hours)
- Brightness selectable in 3 steps
- Test results with fault analysis (LED, charging and battery circuit) as well as status display (operation, function test, duration test) via 3 coloured LEDs
- Automatic function test (weekly) and duration test (every 3 months)
- Manual function test or operational duration test via testing buttons
- Automatic charging monitoring and deep discharge protection with restart inhibit
- 1 minute delay of normal mode after mains returns (acc. to DIN VDE 0100-718)
- Blocking function with CG Controller CGLine 400 or PC interface in times of shut-down
- Luminaires are generally suitable for maintained or non-maintained mode



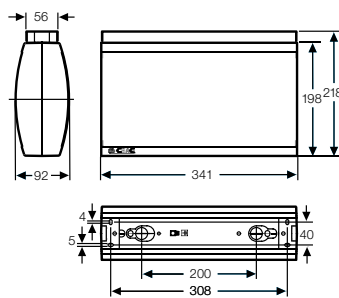
28021 LED CGLine
with cover PU

Viewing distance	32 m
Luminous flux Φ_E/Φ_N at the end of rated operating time	50 % 1 h 20 % 3 h
Housing material	Polycarbonate (850 °C glow wire resistant)
Housing colour	Light grey, sim. RAL 7035
Weight	1.2 kg
Type of mounting	Wall and ceiling mounting
Connection terminals	Mains connection 3 x 2.5 mm ² / Bus connection 2 x 1.5 mm ²
Connection voltage	230 V AC, 50 Hz
Power consumption mains operation	11.0 VA
Permissible ambient temperature	Maintained mode -5 °C to +30 °C Non-maintained mode 0 °C to +35 °C
Battery	maintenance free and gas tight NiMh 4.8 V / 1.1 Ah
Light source	4 x HighPower LEDs

Dimensions in mm



28021 LED CGLine



28021 LED CGLine
with ceiling mounting



28021 LED CGLine
with wall bracket

Ordering details

Type	Scope of supply	Order No.
Escape sign luminaire 28021 1-3/D LED CGLine	double-sided, without cover	4 0071 352 223
Cover PL acc. to DIN 4844	Cover with silkscreened pictogram	4 0071 349 320
Cover PR acc. to DIN 4844	Cover with silkscreened pictogram	4 0071 349 321
Cover PU acc. to DIN 4844	Cover with silkscreened pictogram	4 0071 349 323
Cover PL	Cover with silkscreened pictogram	4 0071 348 011
Cover PR	Cover with silkscreened pictogram	4 0071 348 012
Cover PU	Cover with silkscreened pictogram	4 0071 348 013

* Each luminaire requires 2 covers.

Accessories

Type	Scope of supply	Order No.
Ceiling mounting		4 0071 350 432
Suspension set 0.5 m ¹⁾	with canopy	4 0071 350 400
Chain fastening ¹⁾		4 0071 351 158
Wall bracket		4 0071 350 418
Through-wiring set PE, N, L', L and D1, D2		4 0071 350 422

¹⁾ Ceiling mounting 4 0071 350 432 required