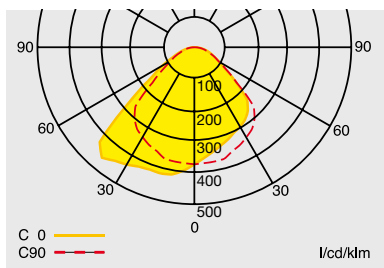


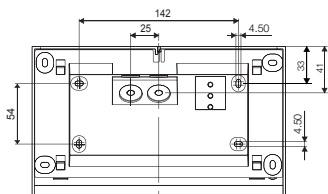
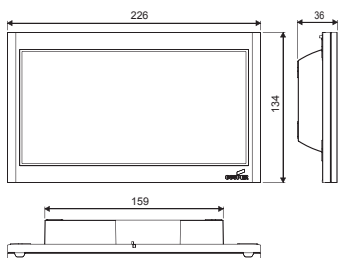
Safety Luminaire GuideLed FSL CG-S



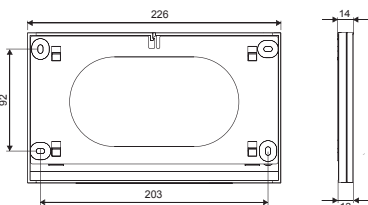
- Safety luminaire in LED technology for surface mounting or semi-recessed mounting
- Low height of only 36 mm or 14 mm
- Anti-glare illumination ensured by precise micro-prism optics.
- Increased safety by use of 3-chip LEDs.
- Reduced battery costs on account of especially low power consumption.
- Low operating costs on account of low effective power of 4 W only.
- Suitable for mounting height of up to 5.5 m.
- Minimum service requirement due to high service life of the LEDs (50 000 hours).
- Installation of safety luminaire without the use of tools at the mounting set.



GuideLed FSL CG-S



FSL 10011 CG-S

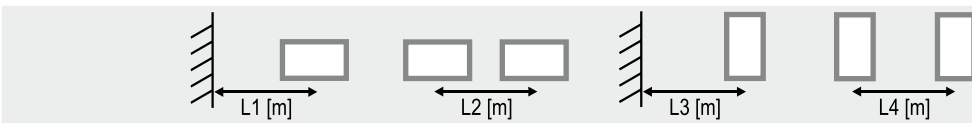


FSL 10012/10013 CG-S

Luminous flux Φ_e/Φ_N at the end of rated operating time	100%
Housing material	PC, PMMA
Housing colour	Light grey RAL 7035
Weight	0.49 kg (10011 FSL CG-S) 0.45 kg (10012 FSL CG-S)
Type of mounting	Ceiling installation / semi-recessed installation
Connection terminal	Clamp terminal 2.5 mm ²
Voltage ranges	220 - 240 V AC, 50/60 Hz 176 - 275 V DC
Current consumption - battery operation (220 V)	18 mA
Power consumption mains operation (apparent power / effective power)	7.2 VA / 4.0 W
Permissible ambient temperature	-20 °C to +40 °C
Light source	LED batten with 3-chip LEDs

Ordering details fastening set and safety luminaire module

Scope of supply	Order No.
Mounting set for GuideLed FSL 10011 CG-S, surface installation, incl. LED supply and CG-S technology (20 addresses)	40071353641
Mounting set for GuideLed FSL 10012 CG-S, recessed installation of the V-CG-SLS28 supply provided and CG-S technology (20 addresses) *	40071353642
Mounting set for GuideLed FSL 10013 CG-S, recessed installation of the V-CG-SLR28 supply provided and CG-S technology (20 addresses) *	40071353644
LED safety luminaire GuideLed FSL 10011 / 10012 CG-S with special micro-prism optics (without mounting set)	40071353590



Planning assistance for GuideLed FSL, escape route illumination

Mounting height [m]	1.0 lx	0.5 lx	1.0 lx	0.5 lx	1.0 lx	0.5 lx	1.0 lx	0.5 lx
2.50	2.70	3.20	6.40	7.60	2.80	3.40	6.60	8.00
3.00	2.90	3.50	6.90	8.30	3.10	3.70	7.40	8.70
3.50	3.00	3.80	7.60	9.00	3.30	4.00	8.00	9.40
4.00	2.90	4.10	8.10	9.60	3.20	4.30	8.60	10.10
4.50	2.60	4.20	8.30	10.20	2.90	4.60	9.10	10.80
5.00	2.30	4.20	8.30	10.80	2.40	4.70	9.30	11.40

Open illumination

2.50	2.30	3.30	5.40	6.40	2.40	3.40	5.40	6.60
3.00	2.30	3.30	6.00	7.00	3.40	3.40	5.80	7.20
3.50	2.30	3.30	6.40	7.80	3.40	3.40	6.40	7.60
4.00	2.30	3.40	6.80	8.20	3.40	3.30	6.80	8.20
4.50	2.30	3.30	7.20	8.80	2.40	4.40	7.20	8.60
5.00	1.30	3.30	7.80	9.20	3.40	4.40	7.60	9.20

Measuring height 0.02 m, maintenance factor MF = 80 %, battery operation, spacings in m
* Installation of the LED supply in a not included device, for further information about the LED supply see page 1/147+1/149