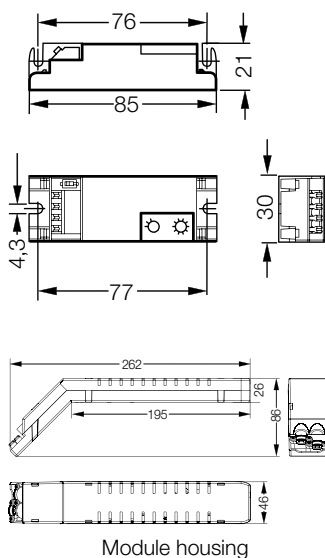


V-CG-S2 Monitoring Module



- Low operating costs due to decreased standby losses < 0.5 W
- Minimized dimensions on the basis of conventional T5 EVG cross section (H x W: 21 x 30 mm) for an eased mounting in narrow luminaires
- Without protective conductor connection. For the use in luminaires with insulation class I or II
- Variable mounting possibilities for different mounting positions (horizontal or sidewise upright)
- Avoidance of installation failures due to a mains connection being protected against polarity reversal
- Universal monitoring module for loads 1.5 – 30 W
- Shortened inspection effort due to the **CEWA GUARD** Technology
Automatic function monitoring of up to 20 luminaires per circuit
- Reduced installation costs due to **STAR**-Technology
Freely programmable mixed operation of the switching modes per luminaire in one circuit
- Reduced installation expenditures as no additional data line to the luminaires is needed
- Enlarged ambient temperature range

Dimensions in mm



Module housing

Rated voltage ranges	220 - 240 V, 50 Hz / 176 - 275 V DC
Standby power loss	< 0.5 W (230 V / 50 Hz)
Power input	1.5 W - 30 W
Maximum line length	500 m (module - luminaire)
Type of mounting	To be mounted in luminaires with protection category I or II
Degree of protection	IP 20
Permissible temperature range	ta = -20 °C up to +60 °C
Maximal permissible test point temperature	tc = 75 °C
Connection terminals	Plug in terminals 1.5 mm ² / reserve-polarity protected
Dimensions in mm (H x L x W)	21 x 85 x 30
Housing material / colour	Flame retardant polycarbonate / grey
Weight	0.035 kg

Ordering details

Scope of supply	Order No.
V-CG-S2	4 0071 352 410
Module housing with strain relief	4 0071 352 765

Attention! The following parameter must be observed.

sliding-switch	I_{OK}	$\hat{I}_{n,OK}$	* If the lamp is faulty the charging rate of the EVG must be smaller than $\hat{I}_{n,OK}$.
ON	> 12.7 mA	< 7.9 mA	
OFF	> 9.4 mA	< 5.8 mA	

For the use of standard EVGs make sure that a correct function of the EVG is guaranteed as well in the voltage range of 186 to 275 V. We recommend to obtain a corresponding certificate of the manufacturer.

The disconnection of the EVGs in case of lamp failure after the switch to emergency mode (DC) must occur within 1.6 seconds.

