

# EGA bus components



EGA/RS232 interface box

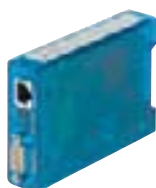
- **Universal monitoring of old CEAG systems based on EGA bus**
- **Display of systems within an aerial view**
- **Also via TCP/IP networks**
- **Integrated e-mail function**
- **Layout display of luminaire level (option)**



EGA/PC interface 2

#### Order specifications EGA bus (ZB96, GVL 24.1)

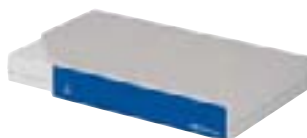
Scope of delivery	Order No.
EGA/RS232 interface for max. 32 devices, one line	400 71 346 450
EGA/PC interface 2 for two lines, with RS232 connection cables, without power supply	400 71 360 040
EGA/PC interface connection box for max. four lines, incl. 24V/1,25A power supply and RS232 connection cables	400 71 347 821
USB/RS232 converter, 4-fold	400 71 347 775



EGA/COM server

#### Order specifications EGA bus/ethernet

Scope of delivery	Order No.
EGA/COM server	400 71 347 591
EGA/IP connection box	400 71 347 593



USB/RS232 converter

#### Accessories

- **Central status display via LED.**
- **Blocking function of all connected systems (e.g. via key switch).**
- **Monitoring of external devices in CGVision via pot. free contacts.**



F3 interface

#### Order specifications F3 interface for connection to CGVision

Scope of delivery	Order No.
F3 interface for CGVision	400 71 347 138
I/O ethernet module	400 71 360 115

## EGA/RS 232 interface

EGA interface box for operation of CEAG emergency lighting systems of one line via EGA bus with CGVision visualisation, monitoring and programming software.

Connection is via RS232 interface (COM port) with standard PC's with Windows 2000™ or Windows XP™

Professional operating systems.

Supply is via 230V/AC inlet connection.

## EGA/PC interface 2

EGA/PC interface 2 for operation of CEAG emergency lighting systems with EGA bus technology, up to two lines via EGA bus to CGVision visualisation, monitoring and programming software.

Connection is via RS232 interface (COM port) with standard PC's with Windows 7 (32 Bit) or Windows 2000™ operating systems. Up to 32 EGA emergency lighting systems can be connected per line.

Supply is external via 24V/DC.

## EGA/PC interface connection box, 4-fold

EGA/PC interface connection box for wall mounting, for operation of CEAG emergency lighting systems with EGA bus technology, up to four lines via EGA bus to CGVision visualisation, monitoring and programming software.

Connection is via RS232 interface (COM port) with standard PC's with Windows XP™ Professional or Windows 2000™ operating systems. Up to 32 EGA emergency lighting systems can be connected per line. With integrated 24V/1.5A electrical power supply.

## USB/RS232 converter, 4-fold

4-fold USB/RS232 converter for converting up to four RS232 interfaces (DB9) to a USB interface to the PC. Simple configuration via software. The USB/RS232 converter enables the connection of up to four EGA lines via EGA/PC interface 2 to the CGVision visualisation, monitoring and programming software with only one USB port.

Includes driver CD and USB cable.

## EGA/COM server

EGA/COM server for the connection of CEAG emergency lighting systems with EGA bus to CGVision by at site available Ethernet (with TCP/IP).

Simple, even building-spanned connection of peripherally placed emergency lighting systems with EGA bus via Ethernet.

## EGA/IP connection box

EGA/IP connection box incl. EGA/COM server and el. power supply for the connection of CEAG emergency lighting systems with EGA bus to CGVision by at site available Ethernet (with TCP/IP).

Simple, even building-spanned connection of peripherally placed emergency lighting systems with EGA bus via Ethernet.

# EGA bus components

## Accessories

### F3 interface

The F3 interface enables connection of an F3 remote display to a CGVision monitoring facility.

For remote display of central battery system operating conditions connected to CGVision. Functionality also ensured with power failure. Blocking of emergency lighting operation for all devices connected to CGVision is possible via a key switch during idle operation times.

Blocking of emergency operation does not affect battery maintenance charging.

---

### I/O ethernet module

- Connection as F3 interface with F3 module (optionally available) to CGVision
  - Control and monitoring of external devices via up to seven pot. free relay outputs or up to eight digital inputs (not yet to CGVision!)
  - Integrated web server, for control/monitoring via standard web browsers (e.g. Firefox)
  - Blocking input (input 8) with differential loop monitoring (closed-circuit principle)
  - Integrated e-mail program, can be freely configured for up to ten e-mail recipients
  - Voltage supply either 230V/AC or 24V/DC
-