

Safety Luminaire

STYLE Industry 40031 CG-S



- Safety luminaire with robust diecast aluminium housing
- Especially suitable for high mounting heights up to 14 m due to narrow distribution reflector
- Optional IP54 set for increased sealing requirements for indoor rooms or for canopied outdoor areas
- Shortened inspection effort due to **CEWA GUARD** technology
- Automatic function monitoring of up to 20 luminaires per circuit
- Reduced installation expenditure with **STAR** technology
- Freely programmable mixed operation of the switching modes per luminaire in one circuit



40031 CG-S IP 41
with transparent cover



40031 CG-S IP 54
with transparent cover



Wire guard

Luminous flux Φ_E/Φ_N at the end of rated operating time	75 %
Housing material	Coated aluminium
Weight incl. cover	1.8 kg
Housing colour	Grey RAL 7035
Type of mounting	Wall and ceiling mounting
Connection terminals	Loop terminals 3 x 2.5 mm ²
Connection voltage	220 - 240 V, 50/60 Hz 176 - 275 V DC
Current consumption - battery operation (220 V)	40 mA
Power consumption mains operation	18 VA
Permissible temperature range	-10 °C to +40 °C
Light source	11 W/TC-SEL, 900 lm

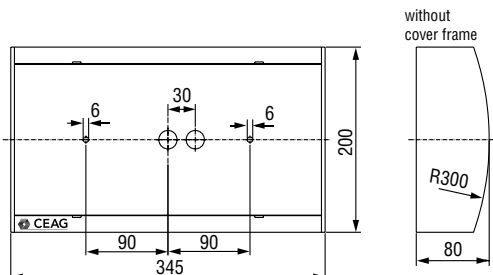
Ordering details

Type	Scope of supply	Order No.
40031 CG-S IP 41	Luminaire housing with transparent cover and CG monitoring with 20-digit address switch, without light source	4 0071 348 403
40031 CG-S IP 54	Luminaire housing with transparent cover and CG monitoring with 20-digit address switch and IP 54 cover frame, without light source	4 0071 348 405

Accessories

Type	Order No.
Wire guard	4 0071 348 370
Ceiling mounting angle	4 0071 348 588
2 x M20 cable glands	4 0071 348 422

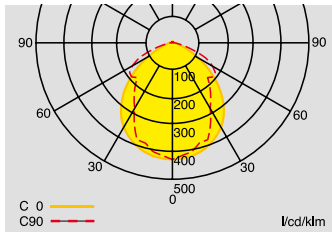
Dimensions in mm



Safety Luminaire STYLE Industry 40031 CG-S

Planning help for 40031 CG-S for E = 1.0 lx (0.5 lx) with transparent cover

Measuring level 0.02 m, maintenance factor MF = 80 %, battery operation, distances in m



Light distribution curve 40031 CG-S with transparent cover

Mounting height (m)	Types of mounting	Mounting diagrams			
		L1	L2	L3	L4
8	Ceiling mounting	6.5 (8.6)	17.2 (21.4)	5.6 (7.7)	15.4 (23.0)
9	Escape route centre	6.4 (8.9)	17.8 (22.4)	5.5 (7.9)	15.6 (23.2)
10		6.2 (9.1)	18.2 (23.4)	5.3 (7.9)	15.8 (23.0)
11		5.7 (9.2)	18.4 (24.2)	5.1 (7.9)	15.6 (21.6)
12		5.1 (9.2)	18.2 (24.8)	4.8 (7.8)	15.2 (22.0)
13		4.1 (9.0)	18.0 (25.4)	4.1 (7.6)	14.8 (22.2)
14		2.8 (8.7)	17.4 (25.6)	2.9 (7.5)	14.6 (22.2)
15		0.7 (8.4)	16.4 (25.8)	0.8 (7.3)	14.0 (22.2)
8	Ceiling mounting	4.4 (6.4)	13.4 (18.2)	5.5 (6.5)	16.2 (21.0)
9	Room illumination	4.4 (6.4)	15.4 (18.4)	5.5 (6.5)	14.8 (22.0)
10		4.4 (6.4)	16.2 (18.0)	5.5 (6.5)	15.0 (23.4)
11		4.4 (7.4)	16.6 (18.0)	4.5 (6.5)	15.4 (24.0)
12		3.4 (6.4)	17.0 (20.4)	4.5 (6.5)	15.6 (21.8)
13		2.4 (6.4)	18.0 (21.6)	3.5 (6.5)	15.2 (21.4)
14		0.7 (6.4)	18.6 (22.4)	0.7 (6.5)	15.0 (21.6)
15		0.7 (5.4)	18.8 (24.0)	0.7 (6.5)	15.0 (21.0)