

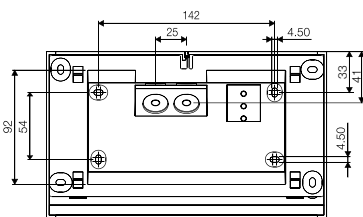
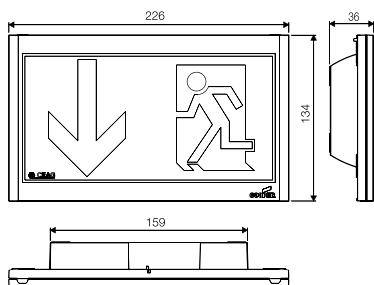
Escape Sign Luminaire GuideLed CG-S Wall Mounting



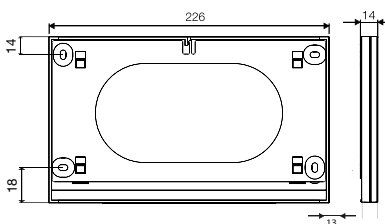
- Escape sign luminaire in LED technology for wall mounting.
- Slender design with mounting heights of 14 mm or 36 mm only.
- Very good perceptibility on account of high luminance of the white contrasting colour > 500 cd/m² in keeping with standard ISO 3864-1 and high uniformity $L_{\min}/L_{\max} > 0.8$
- Increased safety by use of 3-chip LEDs.
- Reduced battery costs on account of especially low power consumption.
- Low operating costs on account of low effective power of 1.9 W only.
- Minimum service requirement due to high service life of the LEDs (50 000 hours).
- Installation of the LED pictogram without tools on the mounting set.



GuideLed 10011 CG-S



10011 CG-S



10012/10013 CG-S

Please observe a distance of 10 mm above for mounting!

Viewing distance	20 m
Luminous flux Φ_E/Φ_N at the end of rated operating time	100 %
Housing material	PC, PMMA
Housing colour	Light grey RAL 7035
Weight	0.47 kg (10011 LED CG-S) 0.41 kg (10012, 10013 LED CG-S)
Type of mounting	Wall mounting
Connection terminal	Clamp terminal 2.5 mm ² reverse-polarity protected
Connection voltage	220 - 240 V AC, 50/60 Hz 176 V - 275 V DC
Current consumption - battery operation (220 V)	8 mA
Power consumption mains operation (apparent power / effective power)	4.0 VA / 1.9 W
Permissible ambient temperature	-20 °C to +40 °C
Light source	LED batten with 3-chip LEDs

Ordering details - fastening set

Scope of supply	Order No.
Wall mounting set for GuideLed 10011 CG-S and 11011 CG-S, surface-mounted installation incl. LED supply and CG-S technology (20 addresses)	40071353641
Wall mounting set for GuideLed 10012 CG-S and 11012 CG-S, flush-mounted installation of the V-CG-SLS28* and CG-S technology (20 addresses)	40071353642
Wall mounting set for GuideLed 10013 CG-S and 11013 CG-S, flush-mounted installation of the V-CG-SLR28* and CG-S technology (20 addresses)	40071353644

Ordering details - LED pictograms (fastening set required)

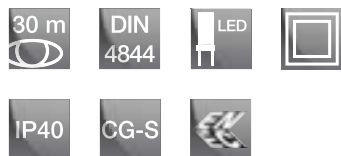
Scope of supply	Order No.
LED pictogram PL for GuideLed 10011/10012/10013 CG-S, DIN 4844, 20 m	40071353000
LED pictogram PR for GuideLed 10011/10012/10013 CG-S, DIN 4844, 20 m	40071353001
LED pictogram PU for GuideLed 10011/10012/10013 CG-S, DIN 4844, 20 m	40071353002
LED pictogram PL for GuideLed 10011/10012/10013 CG-S, 20 m	40071353050
LED pictogram PR for GuideLed 10011/10012/10013 CG-S, 20 m	40071353051
LED pictogram PU for GuideLed 10011/10012/10013 CG-S, 20 m	40071353052

Ordering details - accessories

Scope of supply	Order No.
Feed-through wiring set for GuideLed 10011/11011 CG-S	40071353643

* Installation of the LED supply in a not included device, for further information about the LED supply see page 1/147 + 1/149

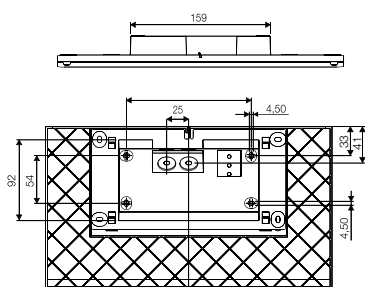
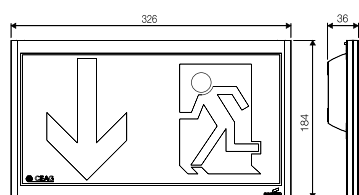
Escape Sign Luminaire GuideLed CG-S Wall Mounting



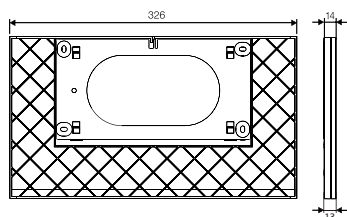
- Escape sign luminaire in LED technology for wall mounting.
- Slender design with mounting heights of 14 mm or 36 mm only.
- Very good perceptibility on account of high luminance of the white contrasting colour > 500 cd/m² in keeping with standard ISO 3864-1 and high uniformity $L_{\min}/L_{\max} > 0.8$
- Increased safety by use of 3-chip LEDs.
- Reduced battery costs on account of especially low power consumption.
- Low operating costs on account of low effective power of 2.6 W only.
- Minimum service requirement due to high service life of the LEDs (50 000 hours).
- Installation of the LED pictogram without tools on the mounting set.



GuideLed 11011 CG-S



11011 CG-S



11012/11013 CG-S

Please observe a distance of 10 mm above for mounting!

Viewing distance:	30 m
Luminous flux Φ_E/Φ_N at the end of rated operating time	100 %
Housing material	PC, PMMA
Housing colour	Light grey RAL 7035
Weight	0.60 kg (11011 LED CG-S) 0.56 kg (11012, 11013 LED CG-S)
Type of mounting	Wall mounting
Connection terminal	Clamp terminal 2.5 mm ² reverse-polarity protected
Connection voltage	220 - 240 V AC, 50/60 Hz 176 V - 275 V DC
Current consumption - battery operation (220 V)	11 mA
Power consumption mains operation (apparent power / effective power)	5.0 VA / 2.6 W
Permissible ambient temperature	-20 °C to +40 °C
Light source	LED batten with 3-chip LEDs

Ordering details - fastening set

Scope of supply	Order No.
Wall mounting set for GuideLed 10011 CG-S and 11011 CG-S, surface-mounted installation incl. LED supply and CG-S technology (20 addresses)	40071353641
Wall mounting set for GuideLed 10012 CG-S and 11012 CG-S, flush-mounted installation of the included V-CG-SLS28* and CG-S technology (20 addresses)	40071353642
Wall mounting set for GuideLed 10013 CG-S and 11013 CG-S, flush-mounted installation of the included V-CG-SLR28* and CG-S technology (20 addresses)	40071353644

Ordering details - LED pictograms (fastening set required)

Scope of supply	Order No.
LED pictogram PL for GuideLed 11011/11012/11013 CG-S, DIN 4844, 30 m	40071353100
LED pictogram PR for GuideLed 11011/11012/11013 CG-S, DIN 4844, 30 m	40071353101
LED pictogram PU for GuideLed 11011/11012/11013 CG-S, DIN 4844, 30 m	40071353102
LED pictogram PL for GuideLed 11011/11012/11013 CG-S, 30 m	40071353150
LED pictogram PR for GuideLed 11011/11012/11013 CG-S, 30 m	40071353151
LED pictogram PU for GuideLed 11011/11012/11013 CG-S, 30 m	40071353152

Ordering details accessories

Scope of supply	Order No.
Feed-through wiring set for GuideLed 10011/11011 CG-S	40071353643

* Installation of the LED supply in a not included device, for further information about the LED supply see page 1/147 + 1/149