

Safety Luminaire as Recessed Ceiling Luminaire STYLE 23011 CG-S

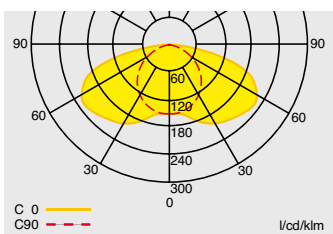
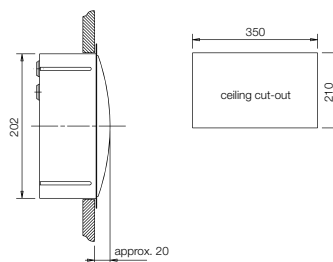
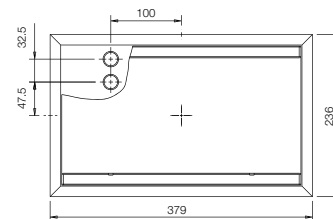
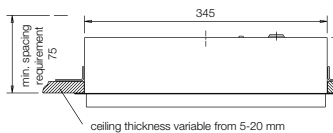


- Safety luminaire for recessed ceiling mounting
- Optimised light distribution for maximum distances from luminaire to luminaire up to 14 m
- Shortened inspection effort due to **CEWA GUARD** technology
- Automatic function monitoring of up to 20 luminaires per circuit
- Reduced installation expenditure with **STAR** technology
- Freely programmable mixed operation of the switching modes per luminaire in one circuit



23011 CG-S with transparent cover

Dimensions in mm



Light distribution curve 23011 CG-S with transparent cover

Viewing distance	32 m
Luminous flux Φ_E/Φ_N at the end of rated operating time	75 %
Housing material	Polycarbonate (850 °C glow wire resistant)
Weight incl. cover	2.5 kg
Housing colour	Grey
Type of mounting	Recessed ceiling mounting
Connection terminals	Loop terminals 3 x 2.5 mm ²
Connection voltage	220 - 240 V, 50/60 Hz 176 - 275 V DC
Current consumption - battery operation (220 V)	30 mA
Power consumption mains operation	16 VA
Permissible temperature range	-10 °C to +40 °C
Light source	8 W/T16, 450 lm

Ordering details

Type	Scope of supply	Order No.
23011 CG-S	Recessed enclosure with luminaire, without cover, with CEWA GUARD monitoring and 20-digit address switch	4 0071 345 952
Cover SL	Transparent cover	4 0071 345 985

For further covers see page 1/47

Accessories

Type	Scope of supply	Order No.
Concrete mounting box	Steel metal box with cable infeeds	4 0071 345 970

Planning help for 23011 CG-S for E = 1.0 lx (0.5 lx) with transparent cover

Measuring level 0.02 m, maintenance factor MF = 80 %, battery operation, distances in m

Mounting height (m)	Types of mounting	L1	L2	L3	L4
2.5	Ceiling mounting	3.0 (3.7)	7.4 (9.0)	4.6 (5.9)	11.8 (14.4)
3.0	Escape route centre	3.1 (4.0)	8.0 (9.8)	4.9 (6.3)	12.6 (15.6)
4.0		3.2 (4.4)	8.6 (11.2)	5.0 (6.8)	13.6 (17.4)
5.0		2.9 (4.5)	8.8 (12.0)	4.7 (7.0)	14.0 (18.6)
6.0		2.2 (4.4)	8.6 (12.4)	4.0 (6.9)	13.8 (19.4)
7.0		0.8 (4.0)	7.8 (12.6)	0.9 (6.6)	12.8 (19.8)
2.0	Wall mounting	2.8 (3.3)	6.6 (7.6)	3.3 (4.0)	8.0 (9.6)
2.5		2.8 (3.4)	6.8 (8.0)	3.1 (4.0)	8.0 (9.8)
3.0		2.7 (3.4)	6.8 (8.2)	0.1 (3.8)	7.6 (9.6)
3.0	Ceiling mounting	2.4 (3.4)	8.0 (9.8)	5.5 (6.5)	12.0 (14.8)
4.0	Room illumination	2.4 (4.4)	8.6 (11.0)	5.5 (5.5)	13.8 (17.0)
5.0		2.4 (4.4)	9.2 (12.2)	4.5 (5.5)	14.6 (18.2)
6.0		1.8 (4.4)	9.2 (12.8)	3.6 (5.5)	15.2 (19.4)
7.0		0.7 (3.7)	8.8 (12.8)	0.7 (5.2)	15.2 (21.0)